

**ADVANCE YOUR RETAIL**  
**Excellence**  
**Safety**  
**Security**

**Sensormatic**  
**ANTI-THEFT**  
**SOLUTIONS**  
**CATALOG**

Pedestal Systems | Hard & Soft Tags | Detachers & Deactivators



Supermarkets



Apparels



Mobile Shops



Pharmacies



Hardwares

## Secure Your Retail Business Merchandise from Shoplifters With Affordable Pedestal Systems



### THEFT DETECTION PEDESTAL SYSTEMS



#### Ultra 1.8m ABS Pedestal System

The new Ultra 1.8 ABS self-contained pedestal's sleek open frame blends seamlessly into any retail setting while providing a visual deterrent against theft and delivering superior pick rates in all environments, even noisy ones.

- Provides shoplifting coverage up to 1.8m (6 ft) between pedestals to protect critical assets
- Delivers superior pick rates in all environments
- Jammer detection combats organized retail crime
- High-impact ABS construction provides long-term durability for virtually any retail setting



#### Ultra Post 6, Synergy Pedestal

The energy-efficient Ultra•Post provides superior Sensormatic AM EAS antitheft protection with up to 1.8m (6ft) of coverage between pedestals.

- Jammer Detection helps reduce shrink by notifying staff of attempts to disable the EAS system using a separate audible alarm
- Better manage loss prevention and store operation efforts
- Consumes up to 40% less power out-of-the-box
- Allows delivery of in-store operational information to better manage loss prevention and store operation efforts



SUITABLE FOR:



Supermarkets



Apparels



Mobile Shops



Pharmacies



Hardwares

Securely Protect Merchandise with  
Sensormatic Anti-Theft Tags



## CONSUMABLES – HARD TAGS



### Magnetic Bottle Cap Tag

- Superior security for high-theft, high-value wine and spirits
- Adjusts to most bottle neck sizes
- Compatible with AM & RF technology



### High-Heel Footwear Tag

- Unique tag protects hard-to-tag high-heel pumps without causing cosmetic damage
- Reusable; the long shelf life helps reduce shrink and decrease operational costs
- Does not interfere with customer "trying-on" experience



### Magnetic 9kG Tack Tag

- Multi-purpose tag protects several merchandise categories.
- High magnetic strength for superior protection
- Promotes open merchandising for increased sales



### Magnetic 9kG Steel Lanyard

- Flexible lanyard attaches to merchandise of all shapes and sizes
- Protects several merchandise categories
- Promotes open merchandising for increased sales

SUITABLE FOR:



## Securely Protect Your Merchandise with Sensormatic Anti-Theft Labels

### CONSUMABLES – SOFT TAGS



#### AP Label

- Reliable detection performance
- Small label footprint minimizes impact on brand promotion and product information
- Works well on liquids, foils and in metal shopping carts



#### Ultra Strip III Insertable Label

- Ideal for CDs, perfume products or other plastic shrink wrapped boxes
- Reactivable for unlimited reuse
- Works well on liquids, foils and in metal shopping carts



#### Value Performance Label

- Provides reliable detection performance
- Helps deliver consistent deactivation at the POS
- Features robust construction for reliable merchandise protection



SUITABLE FOR:



Quickly and Efficiently Remove Tags and Deactivate Labels in a Single Pass



## DETACHERS & DEACTIVATORS

### Hand Wand Activator



- Quickly reactivates AM labels on returned merchandise
- Portable device is ideal for reactivating labels on heavy and/or bulky merchandise

### Magnetic 9kG Detachers



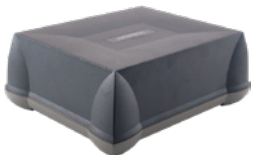
- One-handed detaching accelerates check-out and alleviates unnecessary shopper delays
- Compact design and flexible installation options allow maximum use of POS space
- Security lock prevents unauthorized use when POS is unattended

### SuperTag Power Detacher



- Quickly and efficiently removes all SuperTags to accelerate check-out
- Compact design and flexible installation options allow maximum use of checkout space
- Unique programmable keypad prevent unauthorized use when check stand is unattended

### Deactivation Controller



- Fast deactivation rates expedite checkout for increased customer satisfaction
- Allows generation of operational information to help quickly identify issues
- Status LED lights show “power on”, communication activity, and basic diagnostics

### Value Pad Deactivator



- Scan-enable functionality only deactivates labels with a valid barcode
- Slim design allows maximum use of POS space
- Built-in audible and visual indicators provide feedback when active labels are detected and deactivated

SUITABLE FOR:



Supermarkets



Apparels



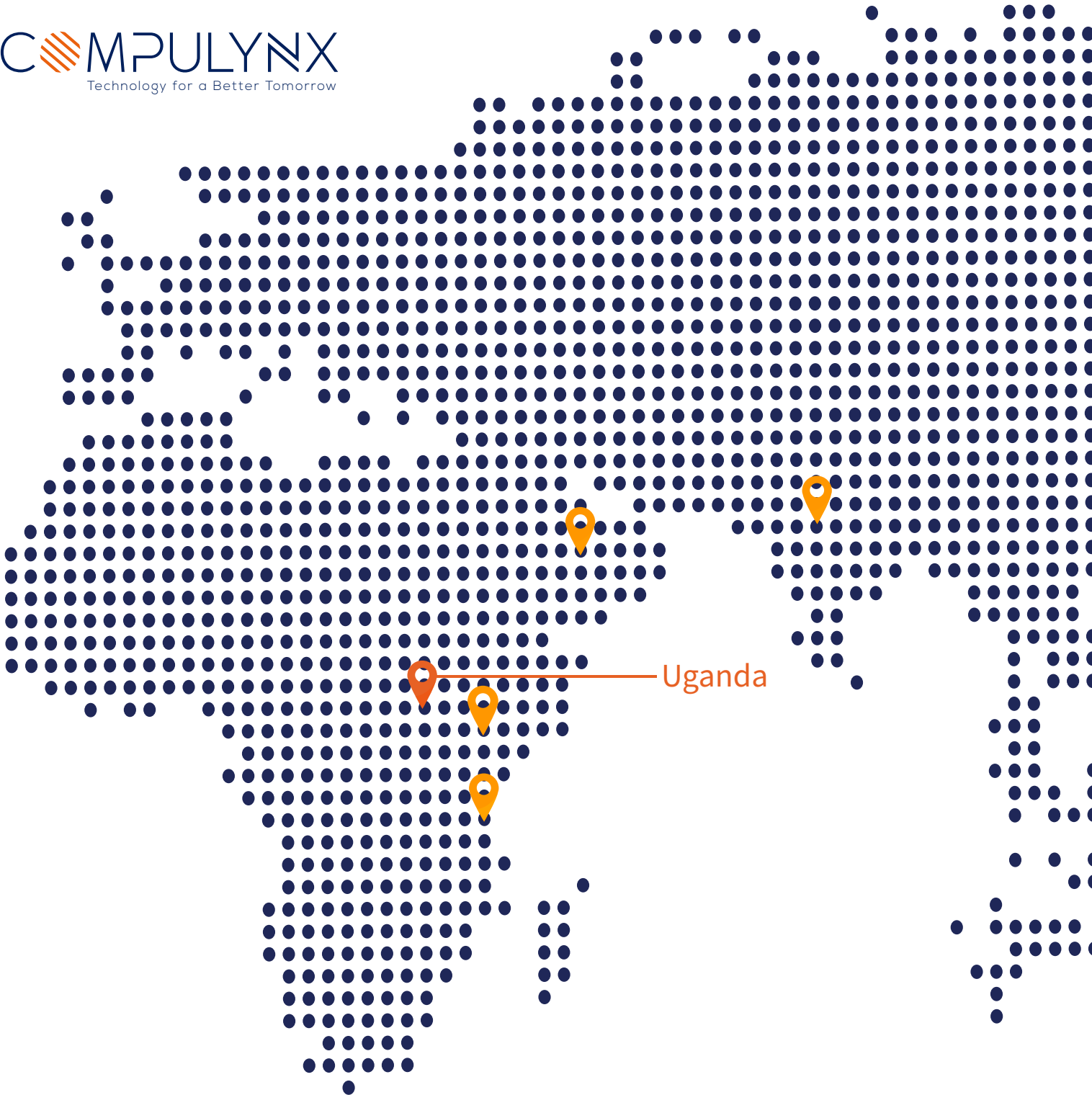
Mobile Shops



Pharmacies



Hardwares



## Ready to Advance your Retail Business Excellence, Safety and Security

+256-414-530 132

+ 256-701-051 000

reception.ug@CompuLynx.com

www.CompuLynx.com

